

CHEVROLET TRACKER

IT'S GO TIME, ANYTIME



FIND NEW ROADS™

CHEVROLET



CHEVROLET TRACKER: IT'S GO TIME, ANYTIME

The Chevrolet Tracker is made for those who want more in their daily drives. This stylish crossover SUV offers smart-to-drive features, eco-friendly tech, and a new generation lightweight engine for high performance, fuel efficiency, and cleaner emissions.

TOP 10 THINGS TO LOVE ABOUT THE CHEVROLET TRACKER



PERFORMANCE THAT SPEAKS FOR ITSELF

Experience powerful drives with the lightweight, high-performance, new generation 1.0L 3-Cylinder ECOTEC TURBO Engine with Active Thermal Management System that delivers 116 horsepower and 175 Nm of torque.

SMOOTH OPERATOR

Enjoy smooth rides anywhere, anytime with the new generation lightweight 6-speed Automatic Transmission with Manual Mode Capability.

DRIVE THE EXTRA MILE

Adapt easily to whatever the road demands with the Stop/Start System that manages the engine according to traffic conditions for reduced fuel consumption and exhaust emissions.

SYNCED TO YOUR LIFESTYLE

Stay plugged in wherever you go with the latest Chevrolet MyLink Infotainment System with Apple CarPlay® and connectivity functions in an intuitive, floating 8-inch colored touchscreen.

RIDE REFRESHED

Get a breath of fresh air in your drives with the Electric Sliding Panoramic Sunroof that helps dissipate heat from the vehicle and brings a beautiful view of the sky while you're staying cozy inside your vehicle.



PRECISION ON ANY PATH

Take control behind the wheel with the Leather-wrapped, flat-bottom steering wheel with Audio Controls and Bosch Electric Power Steering that lets you readily maneuver the vehicle and access volume controls easily.

DYNAMIC IN EVERY DETAIL

Feel like the new track star with a cabin inspired by Chevrolet's legacy of stylish and sporty vehicles. The Tracker's modern interior features the trademark Dual Cockpit design, an ergonomic Dual-Barrel Sports Instrument Cluster, and Leather Sports-Style Seats with red accents that provide utmost comfort on the road.

A THING OF EASE

Say hello to convenience with the Passive Entry System and Push Start Button Ignition that lets you enter your vehicle and start/stop the engine with just a simple touch.

SAFETY IN A STYLISH PACKAGE

Drive in confidence knowing you're protected by active and passive safety technologies like the SRS Airbags, ABS, ESC, EBD, ISOFIX Child Safety System, Engine Immobilizer, Alarm System, and more.

SILENCE THAT SPEAKS VOLUMES

Make every ride more pleasant with Chevrolet's Enhanced LNVH (Low Noise, Vibration, and Harshness) Technology made possible with new lightweight and acoustic insulation materials that absorb indoor and outdoor sounds for more quiet drives.



ENGINE

Bring more power to your everyday drives with the lightweight yet fuel-efficient engine of the Chevrolet Tracker. Backed by smart features and advanced technology, you're sure to get optimal rides wherever you go.

1. MORE POWER TO YOUR DRIVE

Ignite your sense of adventure with its 1.0L 3-Cylinder ECOTEC TURBO Engine with Active Thermal Management System that drives 116 hp and 175 Nm of torque.

2. PUMPED FOR EVERYDAY EFFICIENCY

Optimize your engine's energy with the Active Thermal Management System's components that reduce heat and friction, enhancing your performance on the road.

Mechanical Water Pump with Electronic Flow Valve

Enjoy engine cooling on-demand through multiple sensors and a control valve that has a three-way water inlet to maintain optimum temperature.

Variable Displacement Oil Pump

Experience intelligent cooling and lubrication system through its multiple temperature sensors and automatic adjustments for oil delivery.

Water-Cooled Exhaust Gas Recirculation

Absorb more heat, improve your fuel economy, and enhance your throttle response. It's an all-in-one smart system that reduces nitrogen oxide in the combustion chamber.

Water-Cooled Turbo Intercooler

Get more from your engine with its Electronic Wastegate, Electric Water Pump, and Electronic Bypass Valves that improve heat transfer efficiency and mechanical durability.

3. BUILT FOR THE LONG HAUL

Save more fuel and reduce exhaust emissions with its Engine Stop/Start System. Its Power Voltage Stabilizer, Heavy Duty Start Motor, and Intelligent Battery Sensor ensure that your battery will last longer and keep your power supply ready.

4. NATURE'S CHOICE

Go on more eco-friendly adventures with this smart-to-drive SUV that has a Euro VI emission rating.

EXTERIOR DESIGN

Be the center of attention on any road with the stylish exterior of the Chevrolet Tracker. Each sporty detail is designed to make you stand out and turn heads wherever you go.



1. LIGHT UP THE WAY

Ride safely and confidently in any weather with powerful Automatic Projector Headlamps and increase your road presence with the LED Daytime Running Lights.

2. STYLE THAT RUNS IN THE FAMILY

Stand out from the rest with the chiseled yet lightweight U-Shaped Sculpted Hood that's reminiscent of Chevrolet's trademark lean muscularity.

3. RUNWAY READY

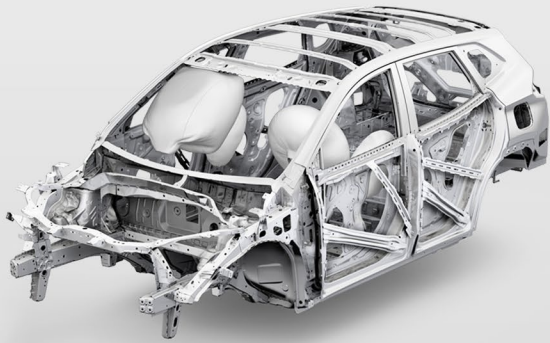
Turn heads on every road with a sporty double grille enhanced by a distinct horizontal red trim, a black bowtie emblem, and black heated side mirrors with a bright L-shaped red trim.

4. CONFIDENCE IN MOTION

Be the center of attention wherever you go with 17-Inch Black Alloy rims featuring eye-catching red accents.

SAFETY FEATURES

Roam with confidence anywhere you go. Equipped with numerous active and passive safety features, the Chevrolet Tracker is designed to keep you and your passengers safe at all times.



DESIGNED FOR YOUR PEACE OF MIND

- High Strength Steel Chassis, Crumple Zones, and Side Impact Beams
- SRS Airbags
- ISOFIX Child Safety System
- Anti-Lock Braking System (ABS)
- Electronic Brakeforce Distribution (EBD)
- Cornering Brake Control (CBC)
- Traction Control System (TCS)
- Engine Drag Control (EDC)
- Electronic Stability Control (ESC)
- Panic Brake Assist (PBA)
- Hill Start Assist (HSA)
- Low Vacuum (Hydraulic) Brake Assist (LVBA)
- No Vacuum (Hydraulic) Brake Assist (NVBA)
- Fading Brake Assist (FBA)
- Torque Vectoring by Brakes (TVBB)
- Rear Parking Sensors
- Reversing Camera
- Tire Pressure Monitoring System (TPMS)
- Engine Immobilizer
- Anti-Theft Alarm System
- Remote Window Operation

INTERIOR

Step inside the Chevrolet Tracker and be welcomed by an ergonomically designed cockpit and a spacious interior to provide you and your passengers more comfort on your drives.

1. TAILORED FOR YOUR CONVENIENCE

Level up your everyday drives with our trademark Dual Cockpit design combined with a Sport-Style Steering Wheel.



2. COMFORT MEETS STYLE

Enjoy more relaxed rides on Drive and Passenger Bucket Seats with sleek red accents.



3. BRING IT ON

Take everyone and everything on any trip with storage solutions of more than 20 units of interior pocket spaces, 60/40 Split-Folding Rear Seats that provide your passengers with ample legroom, and up to 1334L of cargo load for all your luggage.



4. A FRESH PERSPECTIVE

Connect with nature through the Electric Sliding Panoramic Sunroof that welcomes natural light and the beauty of the outdoors in your drives.

DRIVER ASSISTANCE

Experience easy driving with smart and user-friendly features from the Chevrolet Tracker.



1. DRIVE WITH POWER AND EFFICIENCY

Enjoy smooth rides wherever you go with Bosch Electric Power Steering (EPS) designed for highly automated and optimal driving.

2. TECH AT YOUR FINGERTIPS

Drive with ease with the help of the Leather-wrapped Steering Wheel with Multimedia, Call, and Audio Switches that allows you to stay focused on the road while staying connected with the world

3. TOUCH AND GO

Your next adventure is simply a tap away with the Passive Entry System and Push Start Button Ignition that give you easy and convenient access to your vehicle.

4. CONNECTION WITH JUST A TAP

Do more wherever you go when you connect your smartphone to the New Generation 8" Chevrolet MyLink with Apple Carplay®. This sleek floating touch screen system provides you with Bluetooth connectivity, four (4) USB ports, and an SD Card Reader on top of user-friendly features like Real-Time Weather Updates, Call and Message Access, Siri Assist and more.

SPECIFICATIONS AND FEATURES

Vehicle Specifications		Tracker LT Redline	Tracker LS
ENGINE			
Description		1.0L DOHC VVT TURBO	
Displacement (mm)		999	
Engine Block/Cylinder Head Material		All Aluminum	
Output (hp @ rpm)		116 @ 5800 rpm	
Torque (Nm @ rpm)		175 @ 4200 rpm	
Bore and Stroke (mm)		72.6 x 80.4	
Compression Ratio		10.5:1	
Fuel System		Direct Injection	
Emission Rating		Euro 6	
Valvetrain Drive		Chain Driven	
Cylinders		In Line Three	
Engine Stop/Start System with Auto Stop Disable Switch		•	
DRIVE TRAIN			
Transmission		6-Speed AT, Manual Mode	
Drive Wheel		FWD	
SUSPENSION			
Suspension	Front	MacPherson Strut	
	Rear	Compound Crank Rear Axle	
Brake	Front	Ventilated Disc	
	Rear	Solid Disc Brake	
Wheels	Rims	17" Black Alloy with Red Accents	17" Black Alloy
	Tires	215/55R17	
	Spare Wheel	T115/70R16	
STEERING SYSTEM			
Steering Type		Electric Power Steering (EPS)	
Steering Column Adjustment		Tilt-Type	
Steering Wheel	Material	Leather	
	Controls	Multimedia, Call and Audio Switches	
EXTERIOR			
Headlamps	Type	LED Projector	Halogen Multi Focal Reflector
	Manual Leveling Control	•	•
	Auto On/Off	•	•
Daytime Running Lamp		Light Emitting Diode (LED)	
Tail Lamps		LED	Bulb
Wipers	Front	Frameless, Variable	
	Rear	•	
Side Mirrors	Integrated Turn Signal	•	
	Power Adjust	•	
	Heater Function	•	
	Color	Glossy Black with Red Accent	Body Color
Rear Fog Lamps		•	•
Front Grille		Black with Red Accent	Chrome
Door Handles		Body Color	
Black B Pillar		•	
Rear Spoiler		•	
High Mount Stop Lamp		•	
Lower Body Molding		Black	
Roof Antenna		•	
Panoramic Sunroof		•	•
Front & Rear Bowtie Logo		Black	N/A Gold
INTERIOR			
Interior Color	Dashboard and Door Trim	Jet Black with Red Stitch	Jet Black with Captain Blue
	Center Console	Jet Black	
Driver Information Console		Colored Trip, Fuel Range, Average Fuel Economy, with Multi Information 6-Way Adjust (4-Way Power & 2-Way Manual)	Monochromatic 4-Way Manual Adjust
Seats	Driver	4-Way Manual Adjust	
	Front Passenger	Bench Type, 60/40 Split Folding with Retractable Headrest	
	Back Row	Leather-Style	
	Material	5	
Capacity		5	

AVAILABLE COLORS

--	--	--	--	--

*For LS variant only.

Vehicle Specifications		Tracker LT Redline	Tracker LS
Climate Control		Automatic	Manual
AC Cabin/Pollen Filter		-	-
Power Windows		Express Up / Down with Anti-Pinch Feature	
Rear View Mirror		Day-Night	
Sunvisor with Cover and Mirror		Driver and Passenger	Passenger
Rear Window Defogger		-	-
COMFORT AND CONVENIENCE			
Infotainment System	Head Unit	8-Inch Chevrolet MyLink Infotainment System	
	Mobile Integration	Apple Carplay® and Bluetooth	
	Multimedia	Tuner, Audio, Video	
	Speakers	6 Premium (2 Tweeter, 2 Front & 2 Rear Woofers)	4 Premium (2 Tweeter & 2 Front)
12V Electrical Outlet and USB Port		-	-
Remote Window Operation		-	-
Passive Entry		-	N/A
Push Start/Stop Ignition		-	N/A
Luggage Compartment Cover		-	N/A
SAFETY AND SECURITY			
Seatbelts	First Row	3-Pt ELR x 2 with Force Limiter; Driver Pretensioner	
	Passenger Indicator	Driver, Front Passenger, & Three Rear Passenger	Driver
SRS Airbags	Second Row	3-Pt ELR x 3	
	Driver and Passenger	-	-
Sides		-	-
ISOFIX Child Seat Anchorage		-	-
Side Door Impact Beams		-	-
Crumple Zones		-	-
Rear Parking Sensors		-	-
Reversing Camera		-	-
Enhanced Stability Control	Anti-Lock Braking System	-	-
	Electronic Brake Distribution	-	-
	Cornering Brake Control	-	-
	Traction Control System	-	-
	Electronic Stability Control	-	-
	Engine Drag Control	-	-
	Panic Brake Assist	-	-
	Hill Start Assist	-	-
	Low Vacuum (Hydraulic) Brake Assist	-	-
	No Vacuum (Hydraulic) Brake Assist	-	-
	Fading Brake Assist	-	-
	Torque Vectoring by Brakes	-	-
	Mini Spare Detection	-	-
	Emergency Brake Warning	-	-
	Rollover Mitigation	-	-
	Enhanced Understeer Control	-	-
Anti-Theft Alarm System		-	-
Engine Immobilizer		-	-
Tire Pressure Monitoring System		-	-
GENERAL SPECIFICATIONS			
Wheelbase (mm)		2570	
L X W X H (mm)		4270 x 1791 x 1627	
Ground Clearance (mm)		161	
Curb Weight (kg)		1260	
Luggage Capacity (Seat-up/Folded/Folded to Roof) (L)		390/845/1278	390/845/1294
Fuel Tank Capacity (L)		40	

-- Standard N/A - Not Applicable

DIMENSIONS



chevyphilippines www.chevrolet.com.ph



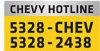
www.shopclickdrive.com.ph

SHOP ONLINE

Find Your Chevy. Talk to a Chevy Sales Consultant Online. Reserve Your Chevy.



COMPLETE CARE



This brochure contains the latest information available at the time of printing (12/01/2021). The manufacturer reserves the right to change specifications without prior notice. Specifications and color availability may vary per model from the actual vehicle unit. Consult with your dealer for available models and specifications.